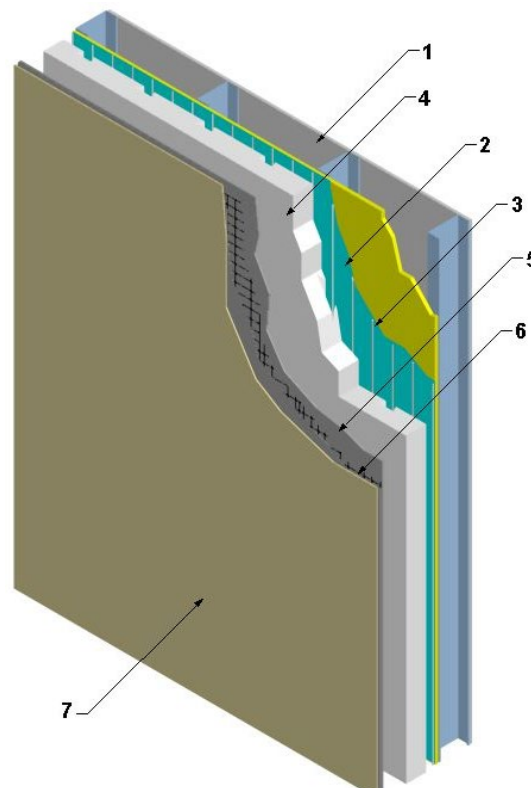


Sto Corp
Design No. STO/WDEIFS 15-01
Exterior Wall Systems
Sto Category 2 Exterior Insulation and Finish Systems (EIFS)
Sto Therm ci and StoTherm ci XPS
CAN/ULC S101 (2014)
Rating: 15 Minutes

Meets the requirements of Clause 3.2.3.8.(1)(b) of the National Building Code of Canada, 2015



1. NON-LOADBEARING WALL ASSEMBLY:
Construct a non-loadbearing wall assembly that shall comply with the local Building Code or other applicable regulatory requirements as established by the local Authority Having Jurisdiction.

2. CERTIFIED MANUFACTURER: Sto Corp.

CERTIFIED PRODUCT: Sto Flexyl air barrier or StoGuard Gold Coat Water Resistant Barrier (WRB).

- A. STO FLEXYL waterproof air barrier is troweled at a wet thickness of 1.6 mm.
- B. STOGUARD waterproof air barrier is applied in two steps. First, an adhesive backed reinforced mesh is applied over joints and coated with Sto Gold Fill or StoGuard Shear, and Second, Sto Gold Coat is spray or roller applied in two 10 mil (0.25 mm) thick applications.



3. CERTIFIED MANUFACTURER: Sto Corp.

CERTIFIED PRODUCT: Sto BTS NC, Sto Primer/Adhesive-B, Sto BTS Xtra, or Sto BTS Plus Adhesive using a notched trowel with notches configured in one of two methods:

- a. 13 mm × 13 mm (nominal 1/2 in. × 1/2 in.) at 63 mm on center (oc).
- b. 16 mm × 16 mm (nominal 5/8 in. × 5/8 in.) at 63 mm oc.

Approximate thickness of the adhesive ribbons following installation is 2 mm.

4. INSULATION BOARD: Install either of the following:

- a. 19 mm to 140 mm (3/4 in. to 5-1/2 in.) thick CAN/ULC S701 Type 1 Expanded Polystyrene (EPS). The nominal density of the EPS is 16 kg/m³ (1.0 pcf).
- b. 19 mm to 70 mm (3/4 in. to 2-3/4 in.) thick CAN/ULC S701 Type 4 Extruded Polystyrene (XPS). The nominal density of the XPS is 32 kg/m³ (2.0 pcf).

Insulation board may be flush-faced or contain geometrically defined cavities of up to 15% of the board area in the wall facing side.

5. CERTIFIED MANUFACTURER: Sto Corp.

CERTIFIED PRODUCT: Sto BTS NC, Sto Primer/Adhesive-B, Sto BTS Xtra or Sto BTS Plus Base Coat.

Apply a base coat of Sto BTS NC, Sto Primer/Adhesive-B, Sto BTS Xtra, or Sto BTS Plus over the insulation board. Embed Sto Mesh (see Item 6) in the base coat and apply a second layer of the base coat. Trowel to thoroughly cover the mesh and remove excess coat. The final dry base coat thickness measures 1.6 mm.

6. CERTIFIED MANUFACTURER: Sto Corp.

CERTIFIED PRODUCT: Sto Mesh

Embed Sto Mesh 152 g/m² (0.49 oz/ft²) into the base coat encapsulating the foam edges by back-wrapping around the insulation panel edges onto WRB with a min. of 64 mm (2-1/2 in.)

7. CERTIFIED MANUFACTURER: Sto Corp.

CERTIFIED PRODUCT: Finish Materials

CERTIFIED MODEL: StoLit, Stolit X, StoLit MAX, StoLit Lotusan, Sto Textured Finish, Sto Essence DPR, StoSilco Lit, Sto Element, Sto-Ecoshapes, or StoVeneer Wood finish materials.

NOTE: Sto Lit finishes are also used to produce StoCreativ®Brick.

Apply one of the following finish coats, according to manufacturer's instructions, over the dried certified base coat (Item 5) to achieve final texture.

- A. STOLIT, STOLIT X, STOLIT MAX, STOLIT LOTUSAN, STO ELEMENT, STO ESSENCE DPR, STOSILCO LIT – Trowel-applied ready-mixed acrylic based finish coat. The applied thickness is governed by the aggregate size (1 mm – 3 mm).
- B. STO-ECOSHAPES – Trowel-apply the Sto Bonding and Pointing Mortar over the dried certified base coat (Item 5). Press Sto-Ecoshapes, preformed acrylic rendered shapes which simulate brickwork or other patterns, in the Sto Bonding and Pointing Mortar per the manufacturer's instructions. The Sto-Ecoshapes thickness is nominally 4 mm – 8 mm.



- C. **STOVENEER WOOD** – Apply Sto-RFP adhesive to Intertek certified base coat (Item 5) using a 6 x 6 mm notched trowel, application weight 2.5 – 3.5 kg/m². Apply 200 x 16 cm, nominal 2 mm thick, StoVeneer Wood horizontally across wall, with 5 – 10 mm spacing between adjoining pieces. Two coats of StoAqua Top Stain glaze or one coat of StoTique are applied over the wall. Once dried, a single coat of Sto Clear Coat is applied.

8. CERTIFIED MANUFACTURER: Sto Corp.

CERTIFIED PRODUCT: Sto Primer

Sto Primer is applied to the prepared base coat prior to finish application as per the manufacturer's instructions.

Sto Armat Classic Plus is a non-cementitious organic compound supplied in pails and used without addition of cement or any other

modifying additives for the provision of enhanced lamina abuse resistance.

CERTIFIED MODEL: Primer

- A. **STO PRIMER** – (Optional; Not Shown) Apply on certified base coat (Item 5) prior to finish application.

9. CERTIFIED MANUFACTURER: Sto Corp.

CERTIFIED PRODUCT: Sto Armat Clasic Plus

CERTIFIED MODEL: Protection Layer

- A. **STO ARMAT CLASSIC PLUS** – (Optional; Not Shown) trowel-apply Sto Armat Classic Plus to the certified base coat (Item 5) and certified reinforcing mesh (Item 6) prior to application of the certified finish coat (Item 7). The final Sto Armat Classic Plus dry thickness measures 3 mm – 5 mm.