

## Silver Slipper Casino Hotel

Bay St Louis, MS



### Project Details:

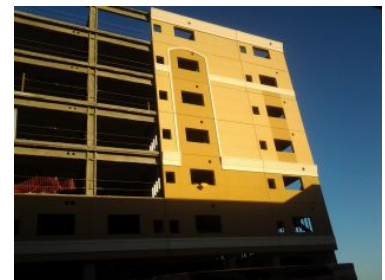
- **Owner:** Silver Slipper Casino Venture, LLC
- **General Contractor:** Wright Hotel Development
- **Architect:** JCJ Architecture
- **Engineer:** Matsen Ford Design Associates, Inc.
- **Program (Building Type):** Hospitality
- **On-site Erection Date:** 2014
- **Panel Type:** StoPanel Premium ci

### Project Overview

The backup panel of this six story hotel tower consists of metal framing, glass-mat gypsum sheathing, and Sto Armor Mat XX embedded in Sto ExtraSeal. Outside the backup panel is a layer of continuous insulation board wrapped in mesh, base coat, primer and finish. Foam board was added to shape different trims and profiles.

### Job Requirements

This project consisted of approximately 40,000 Sq. Ft. of EIFS, a total of 154 Sto Panel Premium ci panels with different trims and profiles. With the hotel located at the water's edge, access to the walls was limited and scaffolding couldn't be used to allow the Casino to maintain their day-to-day activities. Also, a traditional application of EIFS would have required rasping the EPS foam and keeping the foam beads out of the Gulf waters would have proven difficult and could have created an issue with the EPA (Environmental Protection Agency).



### Smart Solution

The 154 panels were constructed in a controlled environment while the GC was digging the dirt preparing for the structure. There were no rain-out days or shut-downs due to high winds quite common on the Gulf Coast. Utilizing the StoPanel approach really was the best solution for all parties.